

Bamboo Fusion

Nova Clic, (Engineered)

INSTALLATION INSTRUCTIONS

IMPORTANT:

Read the following instructions in their entirety before opening any packaging or starting the installation.

- Nova Clic should be left in sealed cartons until time of actual installation
- It is considered the sole responsibility of the installer/owner to determine if the jobsite's sub floor and environmental conditions are suitable for the installation of Nova Clic and accessories.
- Check all boards fully before installation for visual or structural defects. Any defects in the products should be notified in writing to the point of purchase retailer of the flooring before installation.
- The manufacturer cannot be held responsible for site conditions

COLOUR VARIATION

Bamboo is a natural material and variations in colour and tone are to be expected. For the optimum finish, mix different colours and tones to create a blended and natural looking floor.

ACCLIMATION

- Nova Clic should not be moisture acclimated as with conventional hardwood flooring but should remain SEALED cartons until actual time of installation. Temperature and humidity of installation area should be consistent with normal, year-round living conditions for at least a week before installation of Nova Clic flooring. Room temperature of 65-75° F (20-24°C) and a humidity range of 35-55% are recommended and this will need to be maintained at all times to ensure a successful installation. If the RH is not within these parameters, a humidifier / dehumidifier can be used to reach required levels.
- Store the flooring in the UNOPENED cartons at installation area for 72 hours before installation to allow flooring to adjust to room temperature. Do not store the cartons directly on concrete or against walls. Nova Clic does not need any moisture equalization prior to installation and should be installed from just opened cartons. DO NOT OPEN more than a few cartons in advance of installation and only the number of boxes that will be installed within the next few hours. Open 2 or 3 cartons at a time to ensure a good blend of colour.
- **Warning:** Installing Nova Clic in temperature / humidity conditions outside of recommended ranges may result in the floor expanding / contracting which may in turn cause warping / cupping in wet / hot conditions or splitting / cracking in dry / cold conditions. Any sharp increases/decreases in temperature or RH can affect the stability of your product. To ensure a successful installation, please ensure temperature and humidity levels are controlled within the optimum installation conditions at all times.

- HEATING SEASON-LOW HUMIDITY, DRY, (Drying of Floor) All heating methods create dry, low humidity conditions. Humidifiers are recommended to prevent shrinkage or gapping in strand woven bamboo floors due to seasonal periods of low humidity outside of recommended parameters. In this environment the product may contract more than expand which is exaggerated the larger the area covered.
- NON-HEATING SEASON AND COASTAL OR WATERFRONT AREAS - HIGH HUMIDITY, (Swelling of floor) During the non heating season proper humidity levels should be maintained by using an air conditioner, dehumidifier or by turning on your heating system periodically during the summer months. In this environment the product may expand more than contract which is exaggerated the larger the area covered.
- **Note:** To increase reliability, moisture testing should be performed after the HVAC system has been in operation for a minimum of 14 days. Excess moisture on any flooring substrate which is not identified and corrected prior to installation will cause floor covering to fail. Warranties DO NOT cover products installed over improperly prepared subfloors, substrates or environmental related deficiencies.

SUBSTRATE PREPARATION

Site Conditions

- Flooring should be the last item installed for all commercial or domestic applications. All other trades must be completed before the flooring can be installed.
- Ensure site is thoroughly clean and all debris is removed.
- The subfloor must be flat (level to maximum variation of 4mm (3/16") over a 3m (10') radius) and structurally sound.
- **All installations require the use of:**

1) a suitable vapour barrier to be installed directly on the substrate. Ensure joints overlap by at least 200mm (8"), are taped securely with waterproof tape and are folded up all walls and vertical obstructions by 50mm (2").

Plus:

2) a 2mm (3/32") cushion underlay or 2 in 1 underlay is required on top of the vapour barrier. This would be installed by butting the edges together (no overlap) and then taping again. (See sections below for specific requirements).

For Wooden Subfloors

Check moisture content of the wood subfloor using an invasive wood moisture meter (Delmhorst RDM3 invasive wood moisture meter is recommended). **If moisture content is over 12%, the manufacturer recommends Nova Clic should not be installed.**

Bamboo Fusion

Nova Clic, (Engineered)

INSTALLATION INSTRUCTIONS

- Check subfloor is dry year round, has no mould, contaminants and is well secured. Nail or screw every 15cm (6") along joists to avoid squeaking. Rectify if required.
- Check subfloor is level. If not level, sand down high spots and fill low spots with an underlayment patch.
- Use a vapor barrier (perm rating of greater than or equal to 0.7) to cover entire installation area as specified above.
- Installations also require a 2mm (3/32") cushion underlay or 2 in 1 underlay which is required on top of the vapor barrier. This would be installed by butting the edges together (no overlap) and then taping again.
- Confirm with an industry professional about the suitability of your wooden subfloor and crawl space.
- The radiant heating system shall be in operation at recommended temperature for at least 7 days prior to installation, shut off 4 hours prior to installation and then returned to operation once installation is complete.
- As radiant heating systems create dry heat, it is essential that the ambient relative humidity in the installation environment be maintained between a range of 35-55% (a humidifier/dehumidifier may assist in maintaining humidity levels).
- Please follow radiant heating system manufacturer's instructions. The owner/installer is responsible for ensuring all the required environmental conditions are met before installation of Nova Clic.

For Concrete subfloors

- Ensure concrete slab is fully cured and a minimum of 60 days old.
- All uneven areas in the subfloor must be filled with cementitious leveling compound (refer to manufacturers instructions), and ground to conform to minimum requirements of 4mm (3/16") deflection over a 3m (10') radius.
- Check moisture content of floor and wall concrete using a Tramex concrete moisture encounter meter 2004, Tramex CRH or Tramex CRM Expert. If reading is above 4.5, the manufacturer recommends Nova Clic should not be installed.
- If reading is above 4.5, a moisture barrier system such as Sika MB / T-55 adhesive or Wakol PU 280/MS 260 adhesive can be applied to condition the slab to an acceptable moisture content. Follow adhesive manufacturer's guidelines to apply. **It is the owner/installer's responsibility to ensure the concrete is under 4.5 moisture content before installation.** Warranties DO NOT cover products where the moisture content is over 4.5. **Important:** Do not install on concrete unless you are sure it stays dry all year round.
- If using a calcium chloride test, concrete must not exceed 3 lbs /1,000 sq ft/24 hrs.
- Use a vapor barrier (perm rating of 0.7 or less) and cushion underlay to cover entire installation area as specified above.
- Installations also require a 2mm (3/32") cushion underlay or 2 in 1 underlay which is required on top of the vapor barrier. This would be installed by butting the edges together (no overlap) and then taping.

RADIANT HEATING (if applicable)

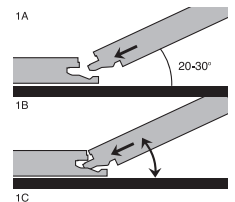
- Nova Clic can only be installed over hydronic radiant heating systems.
- The temperature of the floor must be controlled to a maximum of 25°C (77°F).

INSTALLATION

How the Uniclic system works

Method A: Position the panel to be installed at an angle of 20 to 30 degrees to the panel already installed. Move the panel gently up and down and at the same time exert forward pressure. The panels will automatically click into place. You can either insert the tongue into the groove, or the groove into the tongue.

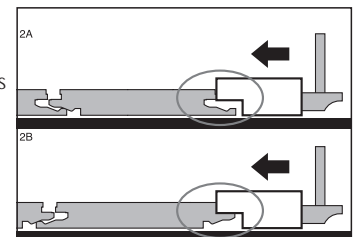
Important: Even though the lock may appear tight, it is mandatory that you secure the lock by gently tapping both the side and end joints. (Use a Uniclic tapping block and do not secure the lock with one strong tap). See diagram 2A-2B.



The tongue in groove method is the most common and easiest way. See diagram 1A - 1B - 1C.

Method B: With Uniclic you can also tap the panels into each other without lifting. For this method you must use a Uniclic tapping block.

The planks should not be joined with a single tap. Avoid damaging the panels by gently and repeatedly tapping the boards to secure the lock. See diagram 2A-2B.

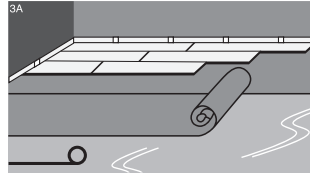


Tip: It is recommended after you finish the first row that you use the angle plus tap on the long side of the board as shown in method A and install the end joints together by positioning the new board as close as possible to the end of the installed board.

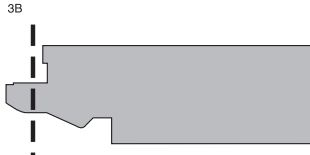
Bamboo Fusion

Nova Clic, (Engineered)

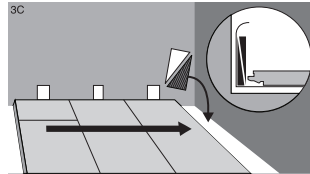
- 1 Install a 2mm (3/32") pad or 2 in 1 underlayment pad; following the manufacturer's instructions over the pre-installed vapour barrier/retarder (see section on sub-floor preparation) Be sure to tape all underpad seams with duct tape. See Diagram 3A.



- 2 Begin the first row with a whole plank. First saw off the tongue on both the long and short side. You will continue to remove the tongue for any machined edge that directly lies against a wall or obstruction. See diagram 3B.

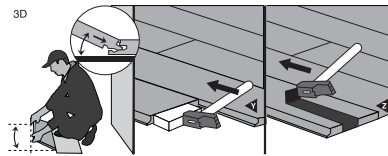


- 3 Put the plank with sawn off sides against the walls. Put spacers between the planks and wall. This will ensure that your expansion joint is wide enough: 12-15mm (1/2" -5/8"). See diagram 3C.



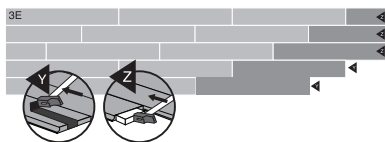
- 4 Install the boards one plank at a time, making sure to angle the boards correctly and ensure the locking system is fully secured.

- 5 Use a tapping block to tap the locking system firmly on the side and end of the boards. Where the tongue has been sawn off for the boards next to the wall, use a pull-bar to tap into position. See diagram 3D.



- 6 Place the planks in a random position and always ensure that the end joints are staggered at least 250mm (10"), this is to provide strength to the combined floor.

- 7 You can use the left-over pieces (cut offs) from the first row to start the following row - these must be a minimum of 250mm (10"). See diagram 3E.



- 8 When an entire row has been completed, review the row to ensure there is no gapping and that all locking mechanisms are fully engaged (all planks are perfectly flat). Note: Never hammer planks without using a tapping block or damage to the boards may result.
- 9 Place a weight (e.g. a box of planks) on the completed boards to stabilize them. Continue to use this method to install the whole floor.

INSTALLATION TIPS

- Allow for extra clearance underneath doorways and cupboards. Check that doors can be opened later with increased height levels before installing the floor with a clearance of 8mm (3/16").
- Open a minimum of 3 boxes and blend different shades together for a natural finish.
- Ensure starting line is straight and fixed
- Stagger end joints of boards from row to row at a minimum of 250mm (10"), to strengthen the entire floor and create a random pattern finish.
- Do not fix, install cabinets or walls on top of the floating floor.
- Fix baseboards over the moisture barrier. Never fix baseboards to the floor itself, but allow the floor to expand and contract underneath the baseboard.
- Because the humidity of a room can vary due to differences between the seasons, the floor must be able to expand and contract in all directions. To facilitate this, an expansion space and contraction allowance of 12 to 15mm (1/2" to 5/8") should be provided at all walls of fixed vertical obstructions. I.e. Kitchen islands etc. It may be necessary to add a quarter round to conceal possible gapping.
- For commercial and higher traffic applications, it is recommended that the Natural Collection & Antique colors be used only.

FLOORS WIDER THAN 20ft (6m)

On floors wider than 20ft (6m), to minimize expansion, more or less spacing may be required depending on geographical area (refer to Acclimation section), interior climate control and the time of year. In some areas, additional spacing may not be necessary. For more information, contact your local manufacturer agent or representative.

POST INSTALLATION PRECAUTIONS

- Never steam mop or wet mop floor surface area EVER
- Protect the floor from scratches arising from furniture and chair feet by means of felt or plastic protector pads.
- Avoid bringing dirt, water and sand from outside by use of a walk off doormat.
- Make sure there is a minimum humidity of 35-55% in the room, if necessary use a humidifier / dehumidifier.
- Keep nails trimmed on animals
- Periodically rearrange rugs and furniture to allow even aging of the floor.
- Use area rugs in high traffic areas

Bamboo Fusion

Nova Clic, (Engineered)

- Never use wax, oil, soap or other household cleaners on your floor unless approved by the manufacturer
- If you decide to cover the floor, (to allow other construction trades to continue working), use rosin paper to cover the floors and only use 3M blue tape (low tack) to hold paper to floor. Do not use plastic films or other non-breathing type coverings as this can cause the floor to become damaged from humidity buildups.
- Due to the unforeseen happening it is suggested that the owner keeps a spare box of floor sealed and dry in a storage area for possible future repairs, an ideal place being inside ones roof.

MAINTENANCE

- Vacuum or sweep to remove dust and dirt prior to cleaning.
- Use hardwood floor cleaner and maintenance products to keep flooring clean.
- Any mirror scratches or damage can be repaired using a natural almond stick or orange oil.

PRODUCT WARRANTY

- The manufacturer offers a Lifetime Limited Structural Warranty (25 Yrs) on residential and commercial applications from the date of purchase.
- The manufacturer offers a 25 Year Residential Limited Wear Warranty and a 5 Year Commercial Limited Wear Warranty from the date of purchase.
- The manufacturer will replace defective products only. This warranty excludes all other costs associated with installation of the product.
- Flooring Warranties DO NOT cover materials with visible defects once they are installed.
- This warranty applies only if Nova Clic flooring has been installed according to specific manufacturer;s installation guidelines. Any deviations from the guidelines (particulary with regards to subfloor preparation and moisture barrier) will result in a claim being rejected.

For full warranty details including exclusions and claims procedures, please refer to your reseller.

For any revisions, please check at www.danskhardwood.com